



Functional Assessment

Staff Development Resources and Plan

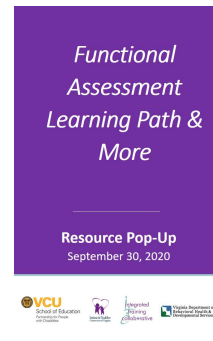


1. Complete Path 1: [Introduction to Functional Assessment](#)

Total Time to Complete: 3 hours

Start a conversation with your staff by reviewing the different components of the [Definition to Functional Assessment](#).

As a group, individually, or a combination of both, complete the activities in the learning path: [Authentic Assessment in Early Intervention](#) online course, [Interactive Story](#), and the [Authentic Assessment in Early Intervention](#) video. Reflect with your staff on their general understanding of functional assessment and what it looks like in practice.



2. Complete Path 2: [A Continuous and Collaborative Process](#)

Total Time to Complete: 2 hours

As a group, watch the video, [Functional Assessment: A Continuous and Collaborative Process](#). Ask staff to define two components of functional assessment: Continuous and Collaborative. As a group, individually, or a combination of both, complete the remaining activities in the learning path: [Ongoing Assessment Occurs Naturally](#), [What is Authentic Assessment?](#), [Virginia's Child Outcomes Booklet: Team Engagement in the Child Outcomes Summary Process](#), and [Engaging Families as Partners in Their Child's Assessment Checklist](#). Reflect with your staff on ways to engage caregivers, build relationships with other team members, and ensure functional assessment is continuous.

3. Complete Path 3: [Functional Assessment During Naturally Occuring Learning Opportunities in Multiple Situations and Settings](#)

Total Time to Complete: 2 1/2 hours

As a group, watch the video, [Functional Assessment: Multiple Situations and Settings and Naturally Occuring](#). Ask your staff to name different routines and activities to support children and their families. As a group, individually, or a combination of both, complete the remaining activities in the learning path: [Family Capacity-Building Practices Checklist](#), [Just Being Kids](#), [Using Routine-Based Interventions in Early Childhood Special Education](#), [Take a Walk with Me](#), and [Seven Key Principles: Looks Like/Doesn't Look Like](#). Invite staff share strategies to identify and engage in different learning opportunities for them.

4. Complete Path 4: [Observing, Listening and Asking Meaningful Questions](#)

Total Time to Complete: 2 1/2 hours

As a group, watch the video, [Functional Assessment: Observing, Listening, and Asking Meaningful Questions](#). Reflect with your staff on ways they observe, listen, and ask meaningful questions. As a group, individually, or a combination of both, complete the activities in the learning path: [Enhancing Quality Functional Assessments for Each Individual Family](#) and [Listening to the Family's Story](#), and [Using Video for REALLY Watching](#). Staff can individually listen to the [podcasts](#): Intentional Observation, Asking Meaningful Questions, and Active Listening.

5. Complete Path 5: [Analyzing Multiple Sources of Information](#)

Total Time to Complete: 3 1/2 hours

As a group, watch the video, [Functional Assessment: Analyzing Information](#). Discuss the different sources of information and ways it supports functional assessment practices. As a group, individually, or a combination of both, complete the activities in the learning path: [How Do You Share Assessment Results with Families](#) and [Assessing Children with Multiple Disabilities-Tips and a Great Resource](#), [Functional Assessment and the Initial IFSP](#), [The Decision Tree: A Tool for Teaming and Family Engagement \(Part I and Part II\)](#), and [Family-Friendly Communication via Authentic Assessment for Early Childhood Intervention Programs](#).

Resources: Visit the [Assessment topics and trends](#) page to access additional resources including: *Assessment for Service Planning Tip Sheet*, *Functional Assessment: Examples of Questions to Ask Families*, *Maryland's crosswalk*, *Learning Bytes about Assessment*, *Assessment for Service Planning Notes Template*, & more.

**Staff can complete the final quiz after completing each path to receive a certificate of completion.