

# Knowing How to Connect the Dots: Recognizing & Responding to Abuse & Neglect

APRIL 1, 2014 • TALKS ON TUESDAYS WEBINAR



**AUDIO DETAILS:**  
**1-866-842-5779**  
**Enter Code: 463-661-9330**

## Goals of what we are talking about today...

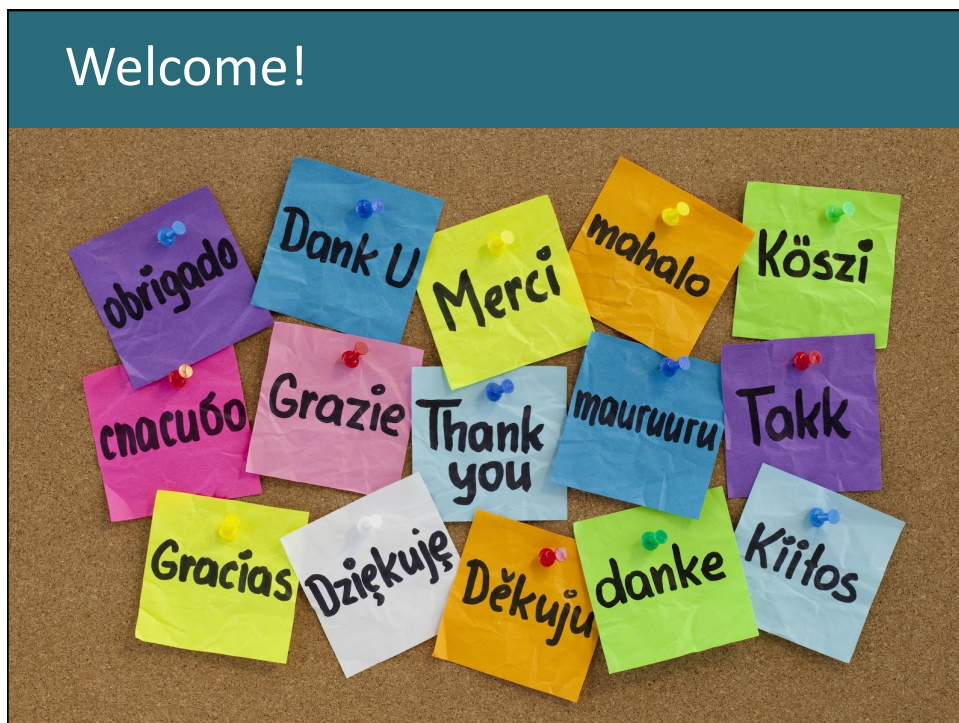
- ✓ Awareness and red flags
- ✓ Increasing people's comfort level with addressing the topic
- ✓ Making a report

# Molly Dellinger-Wray

[mdwray@vcu.edu](mailto:mdwray@vcu.edu)



Welcome!



Child Protective Services

**1-800-552-7096**

Virginia Sexual and Domestic Violence  
Action Alliance

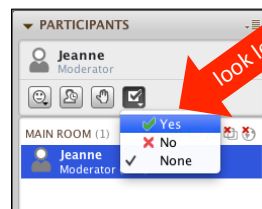
**1-800-838-8238**



Have you ever worked with a family who was  
also involved with Child Protective Services?



or





Child **ABUSE** means...

An act or failure to do an act from a parent or other caretaker that results in:

- Death
- Physical or emotional harm
- Sexual abuse or exploitation

(42 USCA Sec. 5106g)



Child **NEGLECT** means...

An act or failure to act which presents an imminent risk of serious harm (neglect, exploitation)

## What is **SEXUAL ABUSE?**



## Emotional **ABUSE**

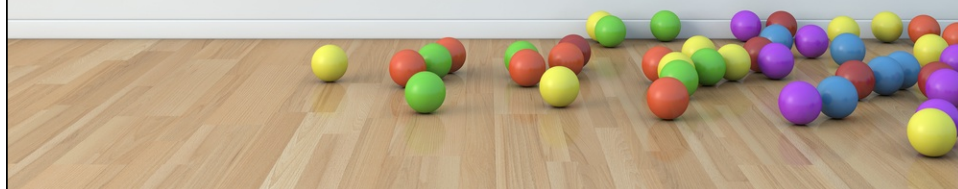






## ABUSE of Children *with* Disabilities

How much more likely are children with disabilities to experience abuse or neglect?



## ABUSE of Children *with* Disabilities

2004 study Children with disabilities are almost **twice as likely** as their non disabled peers to experience abuse/neglect

Children with Disabilities are **1.5 times more likely** to be seriously harmed by the abuse

Children with behavioral health conditions who were maltreated before age 3 were 10 times **more likely** to be maltreated again

Children with disabilities are almost **three times more likely** to be sexually abused, and particularly children who have an intellectual disability or a mental health disability are almost **5 times as likely**!







What are some  
signs of **ABUSE**  
with infants and  
toddlers?







## TRUE or FALSE

Mark the box with the correct answer

Causes of child abuse and neglect include drug abuse and poverty.

TRUE	FALSE
<input type="checkbox"/>	<input type="checkbox"/>

Perpetrators of abuse do not just "lose control."

TRUE	FALSE
<input type="checkbox"/>	<input type="checkbox"/>

Lack of support for a child's needs may influence the occurrence of child abuse or neglect.

TRUE	FALSE
<input type="checkbox"/>	<input type="checkbox"/>







## Mandated reporters may be:

- Social workers
- Teachers, principals and other school personnel
- Physicians, nurses, and other health-care workers
- Counselors, therapists, or mental health professionals
- Child care providers
- Medical examiners
- Law enforcement officers
- Anyone in a caretaker position—babysitters, friends of parents, neighbors, older siblings etc.

*(Child Welfare Information Gateway, August 2012*

*<https://www.childwelfare.gov/responding/mandated.cfm>)*



What if  
mandated  
reporter **FAILS**  
to report?

## Mandated Reporters

### Code of Virginia § 63.2-1509

Persons who, in their professional or official capacity:

- have **reason to suspect** child is abused or neglected;
- report immediately, to the local department or to the VDSS toll-free child abuse and neglect hotline; and
- must disclose all the information that is the basis of the report to the local department including any records or reports documenting the basis of the allegation.
- Reporters are immune from civil and criminal liability unless acting in bad faith or with malicious intent (§§63.2-1509 and 63.2-1512)



- Do you think that this child has been **HARMED BY ACTIONS** or **FAILURE TO ACT** by the child's caregiver?
- If I **DO NOT** report, will I be putting this child at **SIGNIFICANT RISK** of **FURTHER HARM**?

Have you made a report to CPS?



When making a report, provide information on:

- ✓ Child
- ✓ Caretaker/Parent
- ✓ Demographics, history, disabilities, current location
- ✓ Injuries
- ✓ Situation observed/what child said
- ✓ Other family and professionals involved

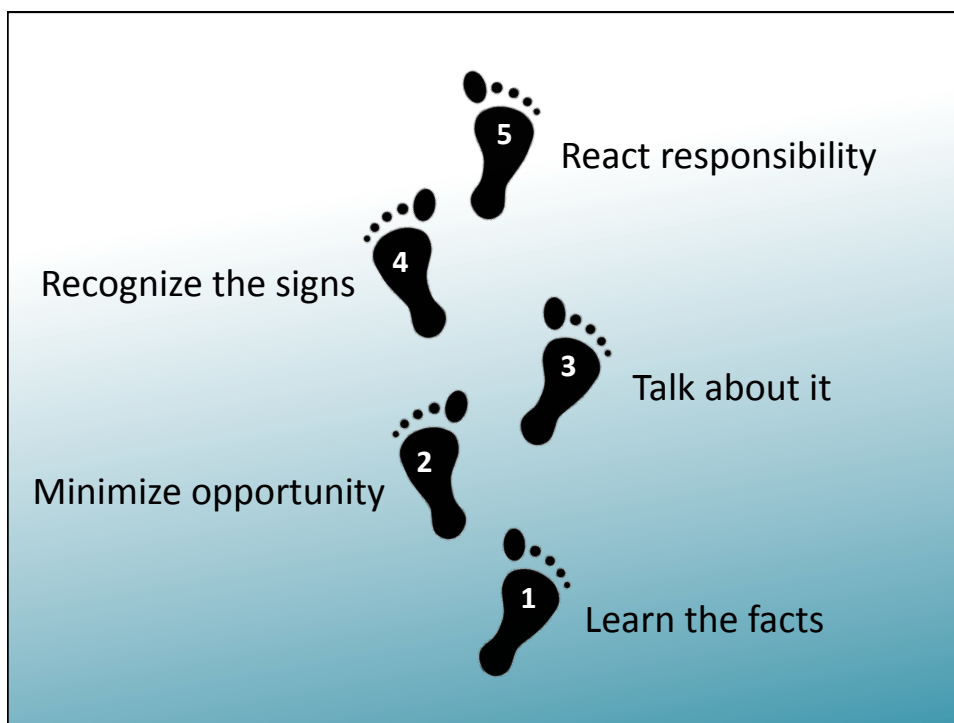
## Reporting **ABUSE**



What can you do **right now** that would help protect children?







## What to do if you suspect a child is being abused/neglected:

Contact your Local Department of Social Services

OR...

Call the VDSS toll-free 24/7 CPS Hotline:

**1-800-552-7096**

Provide information on:

- Child
- Caretaker/Parent
- Demographics, history, disabilities, current location
- Injuries
- Situation observed/what child said
- Other family and professionals involved



**Any Questions?**



**Molly Dellinger-Wray**

[mdwray@vcu.edu](mailto:mdwray@vcu.edu)